



*Kingfisher Company, inc.*

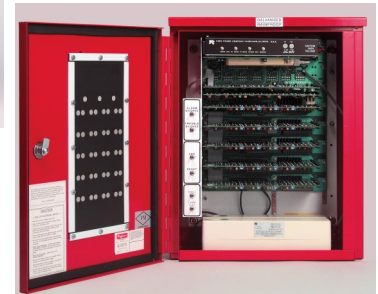
## KFRTI-20/52 Industrial Radio Alarm Control System



**KFRTI-52**  
**(Outdoor Enclosure Shown)**  
**(Made in the U.S.A.)**



**KFRTI-20**  
**(Outdoor Enclosure Shown)**  
**(Made in the U.S.A.)**



### Features:

- Radio Transmitter (High or Low Band)
- Modular Panel
- Four Input Class B Zone Modules  
(Expandable 20 or 52 Zones)
- Two Input Class A Zone Modules  
(Expandable 10 or 26 Zones)
- 2 or 4 Auxiliary Relay Modules
- Walk Test Module
- Door Holder Module
- Matrix / Timer Modules
- NEMA 3R Rain-Proof Cabinet or  
Indoor Available
- Factory Mutual Approved
- Inputs can be configure non-latching and/or  
non audible
- Additional 10 amps of Synchronized NAC  
power with AUX power supply option

### Description:

The KFRTI-20/52 Industrial Radio Alarm Control System is a completely modular, self-contained conventional Fire Alarm Control System. The KFRTI-20/52 is a heavy duty panel capable of operating in a wide range of temperatures and designed for detecting the operation of any approved signal initiating device, indicating the area of the alarm condition by annunciator LEDs, and operates all alarm and auxiliary devices.

The KFRTI-20/52 is furnished in a NEMA 3R rainproof enclosure or a NEMA 1 indoor enclosure. The KFRTI 20/52 has the maximum expansion of 20 or 52 zones, depending on the enclosure and options that are selected.

In addition, the modular KFRTI-20/52 Panel has the optional capability of automatic radio reporting for alarms, supervisory, and trouble conditions with test status reporting for use with a compatible receiving unit.

## Specifications:

**Construction:** NEMA 1R, Indoor Cabinet or NEMA-3R Outdoor Cabinet. With Lock

**Temperature:** -40°F to +140°F (-40°C to +60°C)

**Power:** 100 or 120 VAC line voltage  
24 Volt DC Back-Up Battery Power Supply

**Radio Trans.:** 72-76 MHz and 132-174 MHz

**Weight:** KFRT 20; 42 lbs. KFRT 52: 75 lbs

**Dimensions:**

KFRTI 20 NEMA 1	20" H x 16" W x 6.6" D
KFRTI 20 NEMA 3	20" H x 16" W x 6.6" D
KFRTI 52 NEMA 1	42" H x 16" W x 6.6" D
KFRTI 52 NEMA 3	42" H x 16" W x 6.6" D

### Aux NAC Power Supply Output:

Class 2 Rated power limited outputs.  
24VDC voltage regulated power limited outputs.  
10 amp max total alarm current.  
2.5A max current per output.  
Two auxiliary outputs rate at 1 amp each (1 amp continuous, 1 amp AC disconnect  
Programmable supervised indicating circuit outputs:  
Four (4) Class B, Style W, Y or Four (4) Class A Style Z, or Two (2) Class A, Style Z and  
Two (2) Class B, Style W, Y.  
Thermal and short Circuit protection with auto reset.

## System Capability and Approvals:

KFRTI-20/52 Panels can be installed; as a basic fire alarm panel, a fire suppression panel, or as a radio alarm panel in an existing or new Radio Fire Alarm Reporting System using King-Fisher Company, inc. compatible Radio Base Receiving Stations.

For additional information on adding KFRTI-20/52 Panels to your existing King-Fisher Company, inc. Radio Fire Alarm Reporting System, please consult the factory.

The KFRTI-20/52 Panel including the radio transmitter reporting option are Factory Mutual Approved and designed to comply with all applicable NFPA standards (NFPA 72 and 1221) while providing the capability of monitoring up to 52 emergency zones. The KFRTI-20/52 Panel radio options are FCC Type Accepted.

## Optional Radio Fire Alarm Reporting Feature:

The KFRTI-20/52 Panel with its modular design can be easily upgraded from its fire alarm configuration to a radio fire reporting system within a matter of minutes. Simply add a transmitting antenna, coaxial cable, and two modular plug-in boards consisting of a modular CPU board and transmitter board, for one-way reporting. The KFRTI-20/52 Panel with its capability of automatic radio reporting for alarms, supervisory, and trouble conditions is now ready for use with a compatible receiving unit.

***Kingfisher Company, inc.*** 81 Old Ferry Road - Lowell, MA 01854  
Phone: 978-596-0214 Fax: 978-596-0217 [www.kfci.com](http://www.kfci.com)

## ORDERING INFORMATION

KCi #	Model #	Description
79016	MSAH2A	Main Sub-plate Assembly- 2 Zones, Class A or Class B, <b>Order High-Band Transmitter Separately if needed</b>
79017	MSAL2A	Main Sub-plate Assembly- 2 Zones, Class A or Class B, w/Transmitter, <b>Low-Band</b>
79018	MSAH4B	Main Sub-plate Assembly- 4 Zones, Class B, <b>Order High Band Transmitter Separately if needed</b>
79019	MSAL4B	*Main Sub-plate Assembly- 4 Zones, Class B <b>Low-Band</b>
66120	RTI-THB	Transmitter Module—High Band
66121	RTI-TLB	Transmitter Module—Low Band
91036	TXA	Isolation Transformer input 120 VAC to 120 VAC output
91120	TXA1	Isolation Transformer input 100 VAC to 120 VAC output
91017	ZDM2A	Expansion Zone Module—2 Zones, Class A or Class B, Includes 66107 Zone Mother-board
91019	ZDM4B	Expansion Zone Module—4 Zones, Class B, Includes 66107 Zone Motherboard
66170	ARCM	Auxiliary Relay Control Board— Four Relay, Requires One Module Spot
66824	ARBM	Auxiliary Relay with Bypass Switch Circuit Board
66160-1	WTM	Walk Test Board. Allow testing of system by one technician
20080	KAKT	KAKT Relay—Provides common alarm, or common trouble output
74002	CA203A	Enclosure, NEMA 3R, KFRTI-20, with 211 Lock and Key
74102	CA201R	Enclosure, NEMA 1R, KFRTI-20, with 211 Lock and Key
74003	CA523R	Enclosure, NEMA 3R, KFRTI-52, with 211 Lock and Key
74103	CA521R	Enclosure, NEMA 1R, KFRTI-52, with 211 Lock and Key
79016-DTS		Data Specification Sheet

### Installations:

- All installations shall comply with the Kingfisher Antenna Installation manual part # 75092

Kingfisher Company, inc., products must be used within their published specifications and must be PROPERLY specified, applied, installed, operated, maintained and operationally tested in accordance with their installation instructions at the time of installation and at least twice a year or more often and in accordance with local, state and federal codes, regulations and laws. Specification, application, installation, operation, maintenance and testing must be performed by qualified personnel for proper operation in accordance with all of the latest National Fire Protection Association (NFPA), Underwriters' Laboratories (UL), National Electrical Code (NEC), Occupational Safety and Health Administration (OSHA), local, state, county, province, district, federal and other applicable building and fire standards, guidelines, regulations, laws and codes including, but not limited to, all appendices and amendments and the requirements of the local authority having jurisdiction (AHJ).

NOTE: Due to continuous development of our products, specifications and offerings are subject to change without notice in accordance with Kingfisher Company, inc., standard terms and conditions

**Kingfisher Company, inc.** 81 Old Ferry Road - Lowell, MA 01854  
 Phone: 978-596-0214 Fax: 978-596-0217 [www.kfci.com](http://www.kfci.com)

BLANK PAGE LEFT  
INTENTIONALLY