



ROPAS-D Emergency Dispatch

Description:

The CCU-D Central Control Unit (CCU-D) is used to Control the system via the push buttons on its front panel or through the system software running on a connected computer. The CCU-D communicates via radio frequency with all of the system's Remote Controllers (RCs). The RCs interface field devices to the Emergency Dispatch and Graphics Station (EDGS) and control outdoor speaker stations.

Two-way communication between the EDGS and RCs ensures that you are informed of any changes in status that occur between interrogation periods. The time interval for interrogation is defined by the user. For critical alarms such as a low battery, a warning is immediately reported back to the EDGS.



Ropas-D

Operation:

Data communications between the CCU-D and RC is accomplished using a Frequency Shift Keying (FSK) encoding/decoding format transmitted over any two way radio. For data error detection, an extended parity check and redundant messages are used. Each eight bit block of data in the message is transmitted along with an eight bit parity code. If the data does not match the parity code, the message is ignored. Each data packet consists of three copies of the message to ensure receipt of at least one good message.

Added security is obtained by use of a synchronization code. When the CCU-D is powered up, it sends a sync code to all RCs. This sync code is time dependent (it changes every second); but is unrelated to the time of day. RCs independently keep track of the sync code and only needs to be re-synched if they lose power.

A transmitted message contains the current sync code from the CCU-D which the RC compares to its current sync code. If the sync code does not match, the sirens will not activate. This prevents the recording of a transmitted message and playing it back later with the intention of activating the sirens.

Features:

- **Two way communication system to control ROPAS-D equipment**
- **Software package allows for up to two (2) CCU-Ds**
- **Real time voice**
- **Five (5) distinct alarm tones**
- **Silent system test (automatic or manual)**
- **Status Monitoring: AC fail; AC normal; 24vdc low; 24vdc fail; RTU door open; No sound; Fault; Siren on; Siren off**
- **System Cancel activation**
- **VHF high band-narrow band radio with Antenna**

King-Fisher Company, inc.

2350 Foster Ave. Wheeling, Il. 60090— 6574

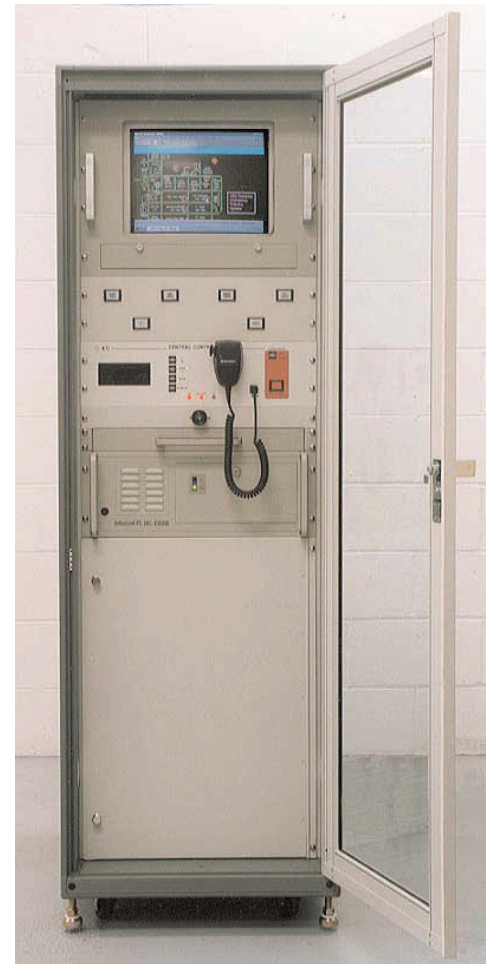
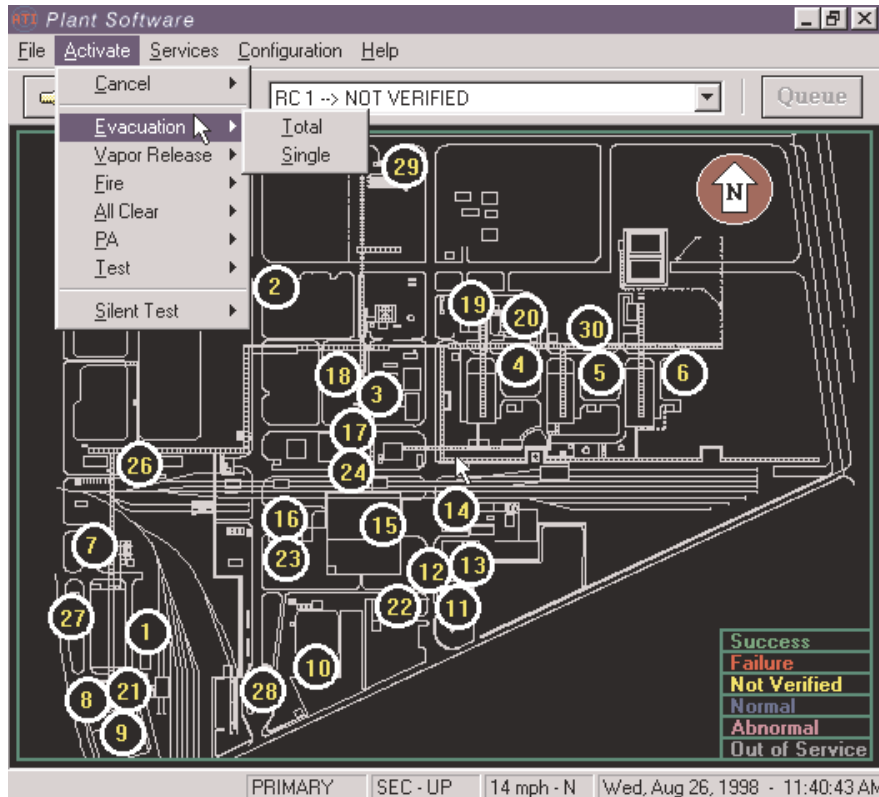
Phone (847)398-7100 Fax (847)255-1507

Phone (888)687-5324(US) Fax (877)687-5324(US)

E-MAIL: sales@kfco.com

WEBSITE: www.kfci.us

Screen Shot of Emergency Dispatch:



Ordering Information:

Model No.	Description
ROPAS-D	Emergency Dispatch
SROPASD	Data Specification Sheet

Additional Features:

- 32X Cd-ROM
- Printer
- Serial Port and RS232 Cable
- CCU-D Alarm screen touchpad and display
- Hand-held microphone set
- Antenna surge suppressor
- 7 hr standby battery for CCU-D and Battery Charger
- Standard group activation of a single unit
- Group or all units included for on demand grouping
- Remote LED Message Display unit
- Message Display Remote Controller with interface to LED Message unit
- Trunked Radio, or Fiber Optics Communication
- Up to twenty (20) Pre Recorded Digitized Messages
- UPS for the Computer and Printer
- Field Programmable Customized Tone or Real Time
- Live Voice Announcements
- Independent alarm activation can be configured by:
 - Tone type
 - Tone duration
 - Number of cycles
 - Pre-recorded messages

Specifications are provided for information only and are believed to be accurate. However, no responsibility is assumed by King-Fisher Company inc., for their use. Specifications subject to change without notice.