



M502M Zone Interface Module



Description:

The M502M provides the same features as the M500M for the FX2000 Series Fire Alarm Panel but also allows for the use of multiple, conventional 2-wire smoke detectors in the circuit. This module requires a resettable signal power source. The M502M internally supervises the separate power source. The red LED indicates when the module is activated. All two-wire detectors that are monitored must be UL compatible with the M502M module.



M502M

Operation:

The M502M Interface Module is intended for use in intelligent, two-wire systems, where the individual address of each module is selected using the built-in rotary decade switches. This module allows intelligent panels to interface and monitor two-wire conventional smoke detectors. It transmits the status (normal, open, or alarm) of one full zone of conventional detectors back to the control panel. All two-wire detectors being monitored must be UL compatible with this module. The M502M has a panel controlled LED indicator.

Features:

- **Allows for the use of multiple, conventional 2-wire smoke detectors in the circuit**
- **Panel controlled LED indicator**
- **UL Listed**
- **Easy to mount**
- **Easy to configure/address**
- **Used with FX2000 Series Fire Alarm Panel**

King-Fisher Company, inc.

2350 Foster Ave. Wheeling, Il. 60090— 6574

Phone (847)398-7100 Fax (847)255-1507

Phone (888)687-5324(US) Fax (877)687-5324(US)

E-MAIL: sales@kfco.com

WEBSITE: www.kfci.us

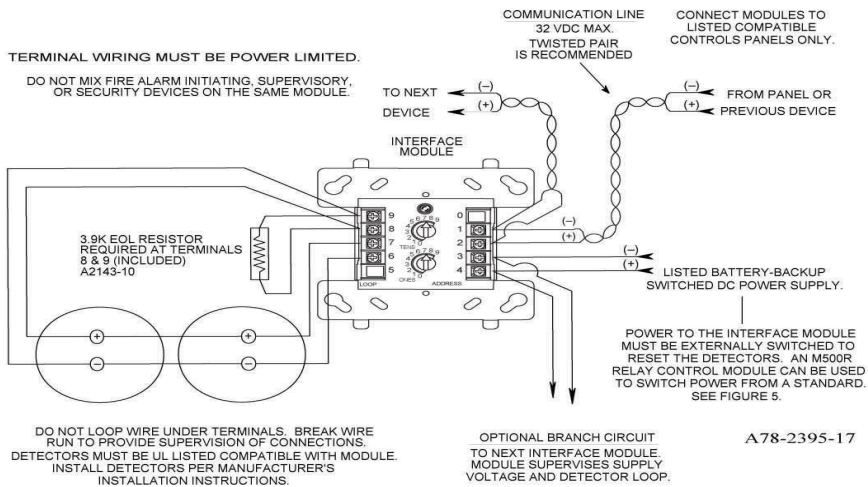
Specifications:

Standby Current:	.0003A max @ 24 VDC (one communication every 5 sec. with LED enabled)
External Power Supply:	18-28 VDC (100 mV ripple max.)
End-of-Line Resistance:	3.9 k (included)
External Standby Current:	.0115A @ 24 VDC (nominal)
External Alarm Current:	.08A @ 24 VDC (nominal)
Normal Operating Current:	15 to 32 VDC
Temperature Range:	0°C to 49°C (32°F to 120°F)
Humidity:	10% to 93% Noncondensing
Dimensions:	1.7"H x 2.7"W x 0.5"D
Weight:	1.2 ounces

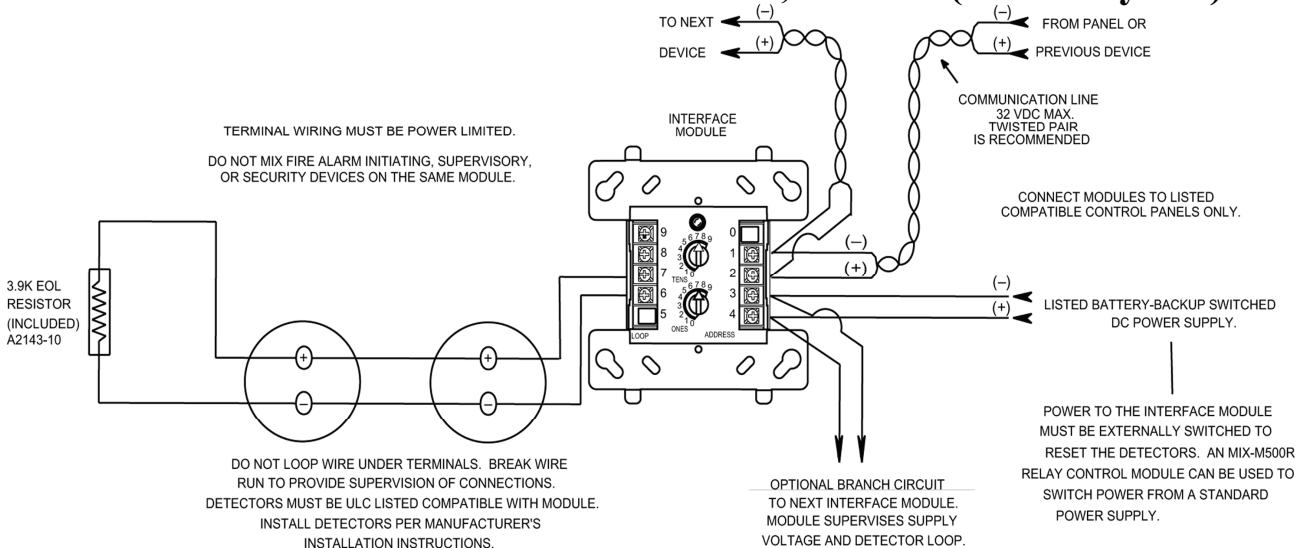
Ordering Information:

Model No.	Description
M502M	Zone Interface Module
SM502M	Data Specification Sheet

Interface two-wire conventional detectors, Class A (NFPA Style D):



Interface two-wire conventional detectors, Class B (NFPA Style B):



Specifications are provided for information only and are believed to be accurate. However, no responsibility is assumed by King-Fisher Company inc., for their use. Specifications subject to change without notice.