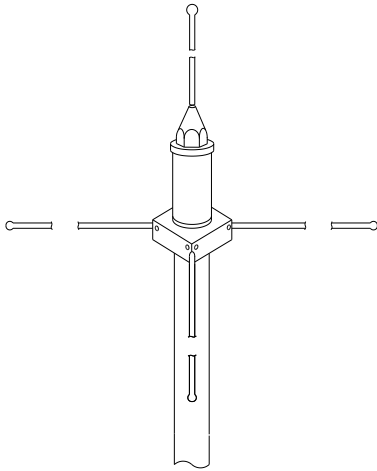


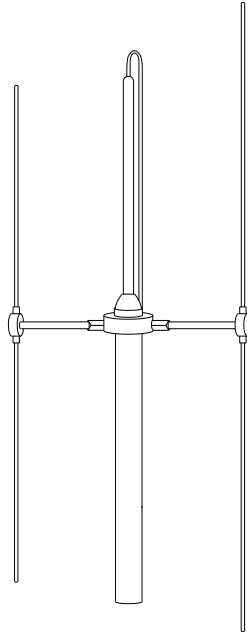


Kingfisher Company, inc.

Receiving & Transmitting Antennas



5/8 Wave Antenna



3 element YAGGI Antenna

Vertical Beam



2-element co-linear antenna

Features:

- High quality antennas, machined in Aircraft Aluminum, Stainless Steel or Brass, with stainless steel screws.
- All Antenna mount on the threaded end of standard rigid conduit.
- Equipped with a female UHF connector.
- Constructed so that a one-piece feed line can be used directly from the antenna to the transmitter or receiver.
- Custom cut to the proper length for your frequency.
- Wind speed analysis for specified antennas, rates them to survive wind gusts of 175 mph.

Installations:

- All installations shall comply with the Kingfisher Antenna Installation manual part # 75092

TRANSMITTER ANTENNAS

50001-xx.xx Transmitter Antenna, Shunt Fed, Omni-Directional, Low Band, 1" Mount, Alum., 72.02—72.98 MHz

This is an omni-directional, two-element co-axial antenna, giving approximately 0 dBd gain

1" Support Pipe REQUIRED

50002-xx.xx Transmitter Antenna, Shunt Fed, Omni-Directional, Low Band, 1" Mount, Alum., 75.02—75.98 MHz

This is an omni-directional, two-element co-axial antenna, giving approximately 0 dBd gain

1" Support Pipe REQUIRED

50004-xxx.xxxx Transmitter Antenna, Serial-Fed, Omni-Directional, High Band, 1" Mount, Alum., 138—174 MHz

This is an omni-directional, two-element co-linear antenna, giving approximately 0 dBd gain

1" Support Pipe REQUIRED

50026-xx.xx Transmitter Antenna, Serial-Fed, Omni-Directional, Low Band, 1" Mount, Alum., 72.02—72.98 MHz

This is an omni-directional, two-element co-axial antenna, giving approximately 0 dBd gain

1" Support Pipe REQUIRED

50027-xx.xx Transmitter Antenna, Serial Fed, Omni-Directional, Low Band, 1" Mount, Alum., 75.40—75.80 MHz

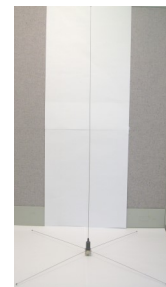
This is an omni-directional, two-element co-linear antenna, giving approximately 3 DB gain

1" Support Pipe REQUIRED

50037-xxx.xxxx Transmitter Antenna, Serial-Fed, Omni-Directional, High Band, 1" Mount, Alum., 138—174 MHz

This omni-directional antenna includes a ground plane section and is a 5/8 Wave Whip Antenna, giving approximately 3 DB gain. Rated for wind gusts up to 175 mph.

1" Support Pipe REQUIRED

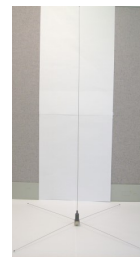


Kingfisher Company, inc. 81 Old Ferry Road - Lowell, MA 01854
Phone: 978-596-0214 Fax: 978-596-0217 www.kfci.com

50038-xx.xxxx Transmitter Antenna, Serial-Fed, Omni-Directional, Low Band, 1" Mount, Alum., 72.06—75.76 MHz

This omni-directional antenna includes a ground plane section and is a 1/4 Wave Whip Antenna, giving approximately 0 DB gain. Rated for wind gusts up to 175 mph.

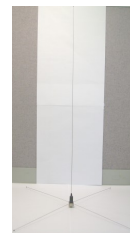
1" Support Pipe REQUIRED



50046-xxx.xxxx Transmitter Antenna, Serial Fed, Omni-Directional, with Ground Plane, High Band, 1" Mount, Stainless Steel, 138—174 MHz

This omni-directional antenna includes a ground plane section. Rated for wind gusts up to 175 mph.

1" Support Pipe REQUIRED



50259-xxx.xxxx Transmitter Antenna, Serial Fed, Vertical Beam, High Band, 1" Mount, Brass, 138—174 MHz

A 3 element YAGGI 8 dBd Gain, Mounts on 1" pipe
A folded radiator provides a direct ground path for lightning protection and static noise reduction.

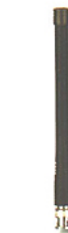
1" Support Pipe REQUIRED



50077 Transmitter Antenna, 1/4 Wave Helical, Omni-Directional, High Band, BNC Connection, Rubber, 136-144 MHz

Injection molded 1/4 wave helical antenna High durability, High efficiency, Textured finish with strain-relief base

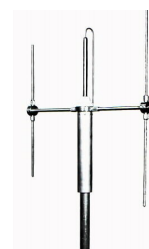
BNC Connection



50155-xxx.xxxx Transmitter Antenna, Serial-Fed, Vertical Beam, High Band, 1" Mount, Aluminum, 138—174 MHz

This model A 3 element YAGGI 8 dBd Gain, Mounts on 1" pipe
A folded radiator provides a direct ground path for lightning protection and static noise reduction. Rated for wind gusts up to 175 mph.

1" Support Pipe REQUIRED

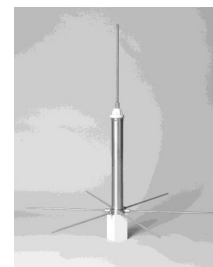


RECEIVER ANTENNAS

50057-xx.xx Receiving Antenna, Serial Fed, Omni-Directional, Low Band, 1.25" Mount, Aluminum, 72.02—75.98 MHz

This model is a two-element co-plane antenna, giving approximately 3 DB gain.

1 1/4" Support Pipe REQUIRED



Kingfisher Company, inc. 81 Old Ferry Road - Lowell, MA 01854
Phone: 978-596-0214 Fax: 978-596-0217 www.kfci.com

50053-xxx.xxxx Receiving Antenna, Serial Fed, Omni-Directional, High Band, 1.25" Mount, Alodined Aluminum, 138—174 MHz

This model includes a ground plane section and is a two-element co-plane antenna, giving approximately 3 DB gain.

1 1/4" Support Pipe REQUIRED



Antenna Specifications:

KCi #	Antenna Type	Feed Type	Gain (dBd)	Directional	Ground Plane	Material	Mount	Band	Freq Range	Weight
50207	Co-Plane	Serial	3	Omni	Yes	Aluminum	1.25"	High	138-174 MHz	1.5lbs
50053	Co-Plane	Serial	3	Omni	Yes	Alodined Aluminum	1.25"	High	138 - 174 MHz	1.5 lbs
50057	Co-Plane	Serial	3	Omni	Yes	Aluminum	1.25"	Low	72.02 -75.98 MHz	8.0 lbs
50037	5/8 Wave Whip	Serial	3	Omni	Yes	Stainless Steel	1"	High	138 - 174 MHz	2.0 lbs
50038	1/4 Wave Whip	Serial	0	Omni	Yes	Stainless Steel	1"	Low	72.02-75.98 MHz	2.0 lbs
50046	1/4 Wave	Serial	0	Omni	Yes	Stainless Steel	1"	High	138—174 MHz	2.0 lbs
50004	Co-Axial	Serial	0	Omni	No	Aluminum	1"	High	138 - 174 MHz	1.75 lbs
50259	Vertical Beam	Serial	8	Directional	No	Brass	1"	High	138 - 174 MHz	6.5 lbs
50155	Vertical Beam	Serial	8	Directional	No	Aluminum	1"	High	138 - 174 MHz	5.0 lbs
50026	Co-Axial	Serial	0	Omni	No	Aluminum	1"	Low 72	72.02 -72.98 MHz	4.5 lbs
50001	Co-Axial	Shunt	0	Omni	No	Aluminum	1"	Low 72	72.02 -72.98 MHz	4.5 lbs
50027	Co-Axial	Serial	0	Omni	No	Aluminum	1"	Low 75	72.02 -72.98 MHz	4.5 lbs
50002	Co-Axial	Shunt	0	Omni	No	Aluminum	1"	Low 75	75.02 -75.98 MHz	4.5 lbs
50077	1/4 Wave Helical	Serial	0	Omni	No	Rubber	BNC	High	136-144 MHz	.5

Kingfisher Company, inc. 81 Old Ferry Road - Lowell, MA 01854
 Phone: 978-596-0214 Fax: 978-596-0217 www.kfci.com

ORDERING INFORMATION

KCi Part #	Model #	Description
50207-xxx.xxxx	KFCP-155	Receiving Antenna – Serial Fed, Omni-Directional, with Ground Plane, 3dBd Gain, High Band, 1-1/4" Mount, Aluminum, 138—174 MHz.
50053-xxx.xxxx	KFCP-155A	Receiving Antenna – Serial Fed, Omni-Directional, with Ground Plane, 3dBd Gain, High Band, 1-1/4" Mount, Alodined Aluminum, 138—174 MHz.
50057-xx.xx	KFCP-40A	Receiving Antenna – Serial Fed, Omni-Directional, with Ground Plane, 3dBd Gain, Low-Band, 1-1/4" Mount, Aluminum, 72.00 75.98 MHz
50037-xxx.xxxx	KFANTOD	Transmitter Antenna – Serial Fed, Omni-Directional, with Ground Plane, 3dBd Gain, High-Band, 1" Mount, Stainless Steel, 138—174 MHz.
50038-xx.xx	KFANTOD-NGL	Transmitter Antenna – Serial Fed, Omni-Directional, with Ground Plane, 0dBd Gain, Low-Band, 1" Mount, Stainless Steel, 72.00—75.98 MHz.
50004-xxx.xxxx	KFCO-151A	Transmitter Antenna – Serial Fed, Omni-Directional, 0dBd Gain, High-Band, 1" Mount, Aluminum, 138—174 MHz.
50046-xxx.xxxx	KFANTOD-NGH	Transmitter Antenna – Serial Fed, Omni-Directional, with Ground Plane, 0dBd Gain, High-Band, 1" Mount, Stainless Steel, 138—174 MHz.
50259-xxx.xxxx	KFVB-150B	Transmitter Antenna – Serial Fed, Vertical Beam, 8dBd Gain, High-Band, 3/4" Mount, Brass, 138—174 MHz.
50155-xxx.xxxx	KFVB-151A	Transmitter Antenna – Serial Fed, Vertical Beam, 8dBd Gain, High-Band, 1" Mount, Aluminum, 138—174 MHz
50026-xx.xx	KFCO-35A	Transmitter Antenna – Serial Fed, Omni-Directional, Unity Gain, Low Band, 1" Mount, Aluminum, 72.00-72.98 MHz
50001-xx.xx	KFCO-36A	Transmitter Antenna - Shunt-Fed, Omni-Directional, Unity Gain, Low Band, 1" Mount, Aluminum, 72.00-72.98 MHz
50027-xx.xx	KFCO-35A2	Transmitter Antenna – Serial Fed, Omni-Directional, Unity Gain, Low Band, 1" Mount, Aluminum, 75.42-75.98 MHz
50002-xx.xx	KFCO-36A2	Transmitter Antenna - Shunt-Fed, Omni-Directional, Unity Gain, Low Band, 1" Mount, Aluminum, 75.42-75.98 MHz
50077	KFEXB-136	Transmitter Antenna – 1/4 Wave Helical, Serial Fed, Omni-Directional, Injection Molded Rubber, High Band, BNC Connector, 136-144 MHz
91143	ANT-KIT	Antenna Wall Mounting Accessory Kit, For 1" Conduit and Antenna
91145	ANT-KIT-1	Antenna Wall Mounting Accessory Kit, For 1-1/4" Conduit and Antenna
50037-DTS		Specification Data Sheet

King-Fisher Company, inc., products must be used within their published specifications and must be PROPERLY specified, applied, installed, operated, maintained and operationally tested in accordance with their installation instructions at the time of installation and at least twice a year or more often and in accordance with local, state and federal codes, regulations and laws. Specification, application, installation, operation, maintenance and testing must be performed by qualified personnel for proper operation in accordance with all of the latest National Fire Protection Association (NFPA), Underwriters' Laboratories (UL), National Electrical Code (NEC), Occupational Safety and Health Administration (OSHA), local, state, county, province, district, federal and other applicable building and fire standards, guidelines, regulations, laws and codes including, but not limited to, all appendices and amendments and the requirements of the local authority having jurisdiction (AHJ).

NOTE: Due to continuous development of our products, specifications and offerings are subject to change without notice in accordance with King-Fisher Company, inc., standard terms and conditions

Kingfisher Company, inc. 81 Old Ferry Road - Lowell, MA 01854
 Phone: 978-596-0214 Fax: 978-596-0217 www.kfci.com

**BLANK PAGE LEFT
INTENTIONALY**

Kingfisher Company, inc. 81 Old Ferry Road - Lowell, MA 01854
Phone: 978-596-0214 Fax: 978-596-0217 www.kfci.com