



Kingfisher Company, inc.

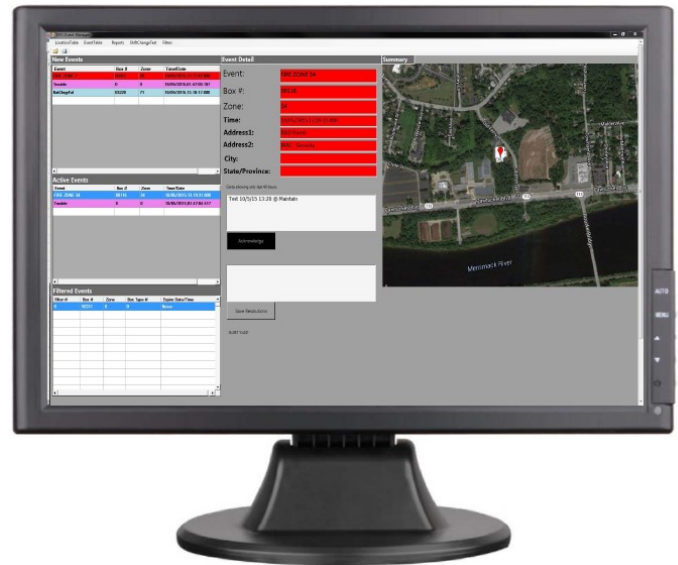
MCR²

**Multi-Communication
Receiving and Reporting
Software**



Features:

- Redundant databases
- Records Shift changes
- Missing Account Reports
- Event Manager displays and sorts Events
- New Event types can be defined and customized
- Event Tables can filter out devices undergoing testing
- Location Tables display and sort location information per transmitter of device
- Map, CAD and Image displaying of events



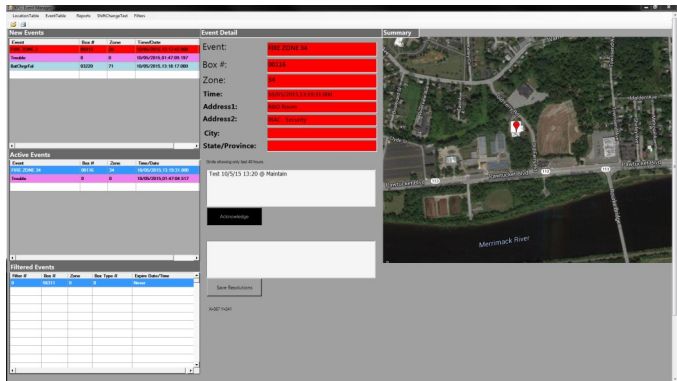
Description:

The Kingfisher MCR² Software is for use on the Kingfisher MCR² Receiver. The software works on a provided PC. Events which the MCR² Receiver processes will be forwarded simultaneously to the MCR² Software display for reporting, acknowledgement and resolution by your emergency personnel. The Event can be displayed, stored and recalled in a variety of ways. Initial event display is by a customized and prioritized Event Display window. Once acknowledged the information can be stored and recalled through standard factory default Tables or customized reports. User interface screens utilize Windows based technology and a Windows based theme providing immediate familiarity with the program.

- Multiple methods to add or delete new accounts and monitored events
- Create custom reports by account, by missing account, by troubles received or based on any data field
- Custom maps with animated images to indicate the location of the event.
- 20 Predefined Factory Events including:
 - Fire
 - Medical
 - Security
 - Tamper
 - Supervisory
 - Police
 - Auxiliary Trouble
 - Trouble
 - Hazmat
 - Test
 - Battery Trouble
 - Power Trouble
 - Alarm
 - Pre-Alarm
 - Water Flow

Event Manager:

- Dispatcher view of incoming and active events
- Customizable maps detailing event location
- Filter nuisance events, such as test, commissioning, and drills
- Generate reports and view database information



Event Table:

- Permanent log of received events
- Color coded by event type
- Actions and resolutions can be viewed or edited

Program Control Form:

- Configure system settings
- Perform system diagnostics
- View system status

Kingfisher Company, inc. 81 Old Ferry Road - Lowell, MA 01854
 Phone: 978-596-0214 Fax: 978-596-0217 www.kfci.com

Location Table Add Form:

- Easily add any Kingfisher Transmitter to your database
- Define location, event, and zone information
- Link to custom image files to be displayed upon event annunciation.

Custom Reports:

- Box history reports
- Missing box reports
- Location reports
- Fully customizable fields
- Selectable date ranges

RFnode	SensorNumber	SensorTypeName	Address1	Address2	City	StateProvince	TimeDate
66312	90	Test	R&D Room	KF1 - 4 Button	Lowell	MA	09/30/2015,13.3...
66312	90	Test	R&D Room	KF1 - 4 Button	Lowell	MA	10/02/2015,18.0...
66312	90	Test	R&D Room	KF1 - 4 Button	Lowell	MA	09/28/2015,16.3...
66312	90	Test	R&D Room	KF1 - 4 Button	Lowell	MA	10/05/2015,06.0...
66312	90	Test	R&D Room	KF1 - 4 Button	Lowell	MA	10/05/2015,08.3...
66312	90	Test	R&D Room	KF1 - 4 Button	Lowell	MA	10/05/2015,01.0...
66312	90	Test	R&D Room	KF1 - 4 Button	Lowell	MA	10/05/2015,03.3...
66312	90	Test	R&D Room	KF1 - 4 Button	Lowell	MA	09/28/2015,19.0...
66312	90	Test	R&D Room	KF1 - 4 Button	Lowell	MA	09/28/2015,21.3...
66312	90	Test	R&D Room	KF1 - 4 Button	Lowell	MA	09/29/2015,00.0...
66312	90	Test	R&D Room	KF1 - 4 Button	Lowell	MA	09/29/2015,02.3...
66312	90	Test	R&D Room	KF1 - 4 Button	Lowell	MA	09/29/2015,05.0...
66312	90	Test	R&D Room	KF1 - 4 Button	Lowell	MA	09/29/2015,07.3...
66312	90	Test	R&D Room	KF1 - 4 Button	Lowell	MA	09/29/2015,10.0...
66312	90	Test	R&D Room	KF1 - 4 Button	Lowell	MA	09/29/2015,12.3...
66312	90	Test	R&D Room	KF1 - 4 Button	Lowell	MA	09/29/2015,15.0...
66312	90	Test	R&D Room	KF1 - 4 Button	Lowell	MA	09/29/2015,17.3...
66312	90	Test	R&D Room	KF1 - 4 Button	Lowell	MA	09/29/2015,20.0...
66312	90	Test	R&D Room	KF1 - 4 Button	Lowell	MA	09/29/2015,22.3...

Kingfisher Company, inc. 81 Old Ferry Road - Lowell, MA 01854
 Phone: 978-596-0214 Fax: 978-596-0217 www.kfci.com

Specifications (PC):

Power:

Voltage: 120/230VAC
Frequency: 50/60Hz

Environmental:

Operating temperature: 41°F - 95°F 5°C - 35°C
Humidity: <85%

Technical Specifications:

CPU: Intel 3.50 GHz Quad-Core Xeon
RAM: 16 GB Ram DDR3 SDRAM PC3-12800 1600MHz
Hard Drive Capacity: 256 GB
Operating System: Windows 7 64 bit or Windows 8 Compatible

Display & Graphics: (Additional display and graphics)

Graphics Controller: NV Quadro K620
Screen Resolution: Variable

ORDERING INFORMATION

KCi #	Model #	Description
97440	MCR ² GUI	MCR ² , Graphical User Interface Software
97441	MCR ² SDS	Server Database Software, Required for Enterprise Configuration Server PCs
97442	MCR ² CDS	Client Database Software, Required for Enterprise Configuration Client PCs

Kingfisher Company, inc., products must be used within their published specifications and must be PROPERLY specified, applied, installed, operated, maintained and operationally tested in accordance with their installation instructions at the time of installation and at least twice a year or more often and in accordance with local, state and federal codes, regulations and laws. Specification, application, installation, operation, maintenance and testing must be performed by qualified personnel for proper operation in accordance with all of the latest National Fire Protection Association (NFPA), Underwriters' Laboratories (UL), National Electrical Code (NEC), Occupational Safety and Health Administration (OSHA), local, state, county, province, district, federal and other applicable building and fire standards, guidelines, regulations, laws and codes including, but not limited to, all appendices and amendments and the requirements of the local authority having jurisdiction (AHJ).

NOTE: Due to continuous development of our products, specifications and offerings are subject to change without notice in accordance with Kingfisher Company, inc., standard terms and conditions

Kingfisher Company, inc. 81 Old Ferry Road - Lowell, MA 01854
Phone: 978-596-0214 Fax: 978-596-0217 www.kfci.com