



*Kingfisher Company, inc.*

## 1002WEP Explosion Proof Siren



### **Description:**

The 1002WEP EXPLOSION PROOF POWER ALARM siren is a rain tight solid state audible alarm, that features a choice of 9 field selectable tones plus remote control selection of 4 tones with priority. All models of 1002WEP alarms are o-ring gasketed and are UL listed for Class I, Group C & D locations, NEMA Type 4x, and marine outside (salt water) use.

### **Features:**

- Weatherproof Construction
- 8 Selectable Tones
- UL Listed
- NEMA 4X Housing

### **Construction/Design:**

The 1002WEP Explosion proof sounder is UL Listed Class I, Division I and II, Class II Division I and II, and Class III for use in specified hazardous locations and/or combustible atmospheres as classified by the National Electric Code. The explosion proof sounder has 9 integrated field selectable sounds plus remote control selection of 4 sounds with priority. Speaker housing is O-ring gasket and NEMA 4X and marine (salt water) rated. The Projector horn is a reflex type with polycarbonate re-entrant section. Voice coils are field-replaceable, and the operating temperature rating is -55C to 85C; -67F to 185F.

## Specifications:

<b>Volume:</b>	S7-110dbA @ 10 feet*
<b>Voltage and Amperage:</b>	24VDC draws 0.8A 120VAC draws 0.2A 50/60 Hz 240VAC draws 0.1A 50/60 Hz
<b>Enclosure Construction:</b>	Weatherproof construction, fiberglass horn, cast aluminum housing
<b>Mounting:</b>	Omni directional mounting bracket, 1/2" conduit access
<b>Ambient Temperature Range:</b>	-55° C to +85° C -67° F to +185° F
<b>Size and Weight:</b>	14" wide x 8" high x 18.5" long ( 356mm x 152mm x 445mm )
<b>Weight:</b>	19.5 lbs ( 8.85kg )

\* Synchronization is not an option for device

## ORDERING INFORMATION

KCi #	Model #	Description
80503	KF1002WEP/24	Explosion Proof Horn (Grey)
80503-DTS		Specification Data Sheet

Kingfisher Company, inc., products must be used within their published specifications and must be PROPERLY specified, applied, installed, operated, maintained and operationally tested in accordance with their installation instructions at the time of installation and at least twice a year or more often and in accordance with local, state and federal codes, regulations and laws. Specification, application, installation, operation, maintenance and testing must be performed by qualified personnel for proper operation in accordance with all of the latest National Fire Protection Association (NFPA), Underwriters' Laboratories (UL), National Electrical Code (NEC), Occupational Safety and Health Administration (OSHA), local, state, county, province, district, federal and other applicable building and fire standards, guidelines, regulations, laws and codes including, but not limited to, all appendices and amendments and the requirements of the local authority having jurisdiction (AHJ).

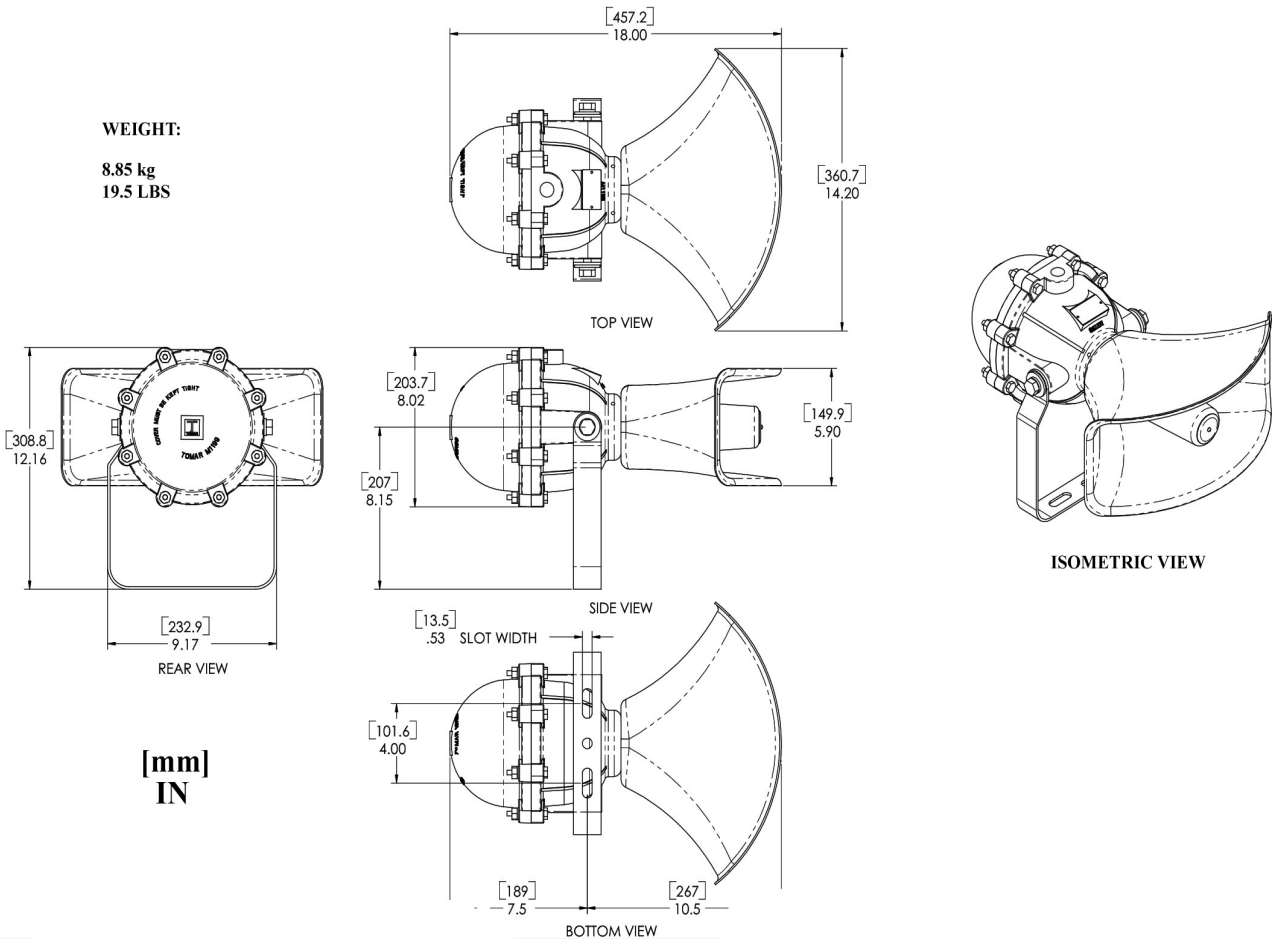
NOTE: Due to continuous development of our products, specifications and offerings are subject to change without notice in accordance with Kingfisher Company, inc., standard terms and conditions

***Kingfisher Company, inc.*** 81 Old Ferry Road - Lowell, MA 01854  
Phone: 978-596-0214 Fax: 978-596-0217 [www.kfci.com](http://www.kfci.com)

# DRAWINGS OR DIAGRAMS

**WEIGHT:**

**8.85 kg  
19.5 LBS**



**Kingfisher Company, inc.** 81 Old Ferry Road - Lowell, MA 01854  
 Phone: 978-596-0214 Fax: 978-596-0217 [www.kfci.com](http://www.kfci.com)

BLANK PAGE LEFT  
INTENTIONALLY

***Kingfisher Company, inc.*** 81 Old Ferry Road - Lowell, MA 01854  
Phone: 978-596-0214 Fax: 978-596-0217 [www.kfci.com](http://www.kfci.com)