



Kingfisher Company, inc.

Bell Base Pedestal with Pole

Features:

- Cast Aluminum Base, with removable access door
- Stainless Steel Aluminum Pole
- Solar Power Option
- Standalone Operation
- Optional Steel Stabilizing Base
- For use with KF1 and KF3 Radio Transmitters
- Portable or Permanent Installation

Description:

This Bell Base Pedestal with Pole is designed to work with KF1/KF3 Kingfisher Transmitters and Kingfisher Antenna's. The Pedestal can either be mounted to a surface "permanently" with the Anchor Cage option or a "portable" stabilizing base can be used for portability. Power can be supplied from a local source or a Kingfisher Solar Cell Battery Charger can be ordered with a KF1/KF3 Transmitter.

The Bell Base Pedestal with Pole can be used in any area that needs a temporary or permanent emergency radio transmission system.

Suggested temporary uses are in dry docks, industrial plants, refineries, shipping ports, outdoor areas of assembly, high rise construction sites, and temporary replacement of existing warning system during renovations.

Suggested permanent locations: municipalities, campuses, outdoor areas, or anywhere where an outdoor permanent means of emergency communication is required.



Specifications: See Descriptions

ORDERING INFORMATION

KCi #	Model #	Description
50009	BBP11	Bell Base Pedestal with Pole 11'x5"
50114	BBP15	Bell Base Pedestal with Pole 15'x5"
50081	BBP6	Bell Base Pedestal—Portable—6'x5"
91051	ACMH	Anchor Cage w/Hardware for Bell Base Pedestal with Pole
91064	SBMH	Stabilizing Base w/Hardware for making Bell Base Pedestal with Pole portable
91052	MBH	Mounting Bracket w/Hardware for KF1 Transmitters or Enclosures to BBP with Pole
91053	MBH-P	Mounting Bracket w/Hardware for KF3 Transmitters to Bell Base Pedestal with Pole
91054	MBHW1	Mounting Bracket w/Hardware for KF1 Transmitters or Enclosures to Wood Pole
91055	MBHW3	Mounting Bracket w/Hardware for KF3 Transmitters to Wood Pole
50065	RCP-5	Rain Cap for Pedestal 5"
75096	75096-MAN	Installation Manual
50009-DTS		Specification Data Sheet

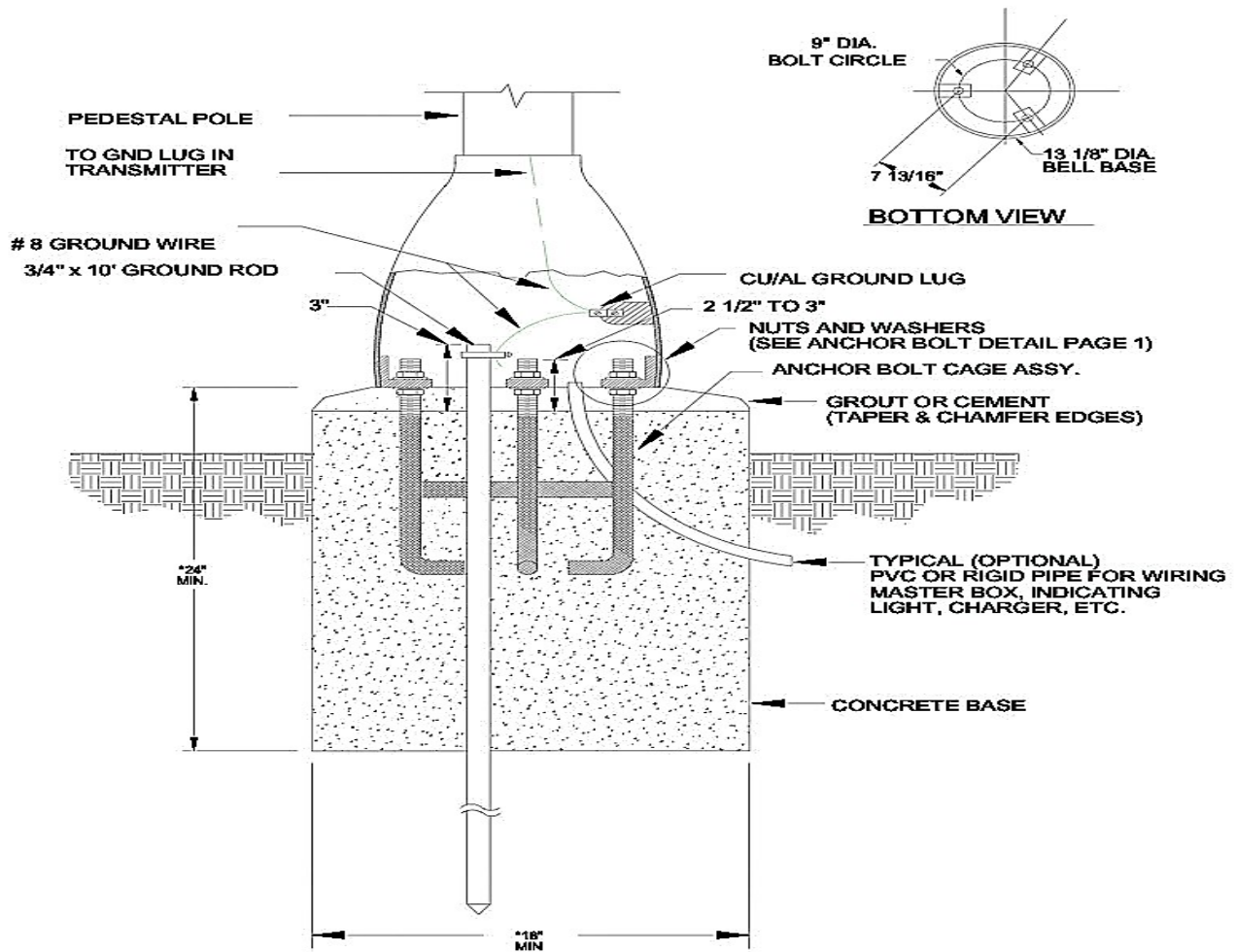
Kingfisher Company, inc., products must be used within their published specifications and must be PROPERLY specified, applied, installed, operated, maintained and operationally tested in accordance with their installation instructions at the time of installation and at least twice a year or more often and in accordance with local, state and federal codes, regulations and laws. Specification, application, installation, operation, maintenance and testing must be performed by qualified personnel for proper operation in accordance with all of the latest National Fire Protection Association (NFPA), Underwriters' Laboratories (UL), National Electrical Code (NEC), Occupational Safety and Health Administration (OSHA), local, state, county, province, district, federal and other applicable building and fire standards, guidelines, regulations, laws and codes including, but not limited to, all appendices and amendments and the requirements of the local authority having jurisdiction (AHJ).

NOTE: Due to continuous development of our products, specifications and offerings are subject to change without notice in accordance with Kingfisher Company, inc., standard terms and conditions

Kingfisher Company, inc. 81 Old Ferry Road - Lowell, MA 01854
Phone: 978-596-0214 Fax: 978-596-0217 www.kfci.com

DRAWINGS OR DIAGRAMS

Installation:



* DEPENDING ON FROST LEVEL, SOIL CONDITIONS, AND APPLICABLE CODES.

Kingfisher Company, inc. 81 Old Ferry Road - Lowell, MA 01854
 Phone: 978-596-0214 Fax: 978-596-0217 www.kfci.com

BLANK PAGE LEFT
INTENTIONALLY

King-Fisher Company, inc. 81 Old Ferry Road - Lowell, MA 01854
Phone: 978-596-0214 Fax: 978-596-0217 www.kfci.com